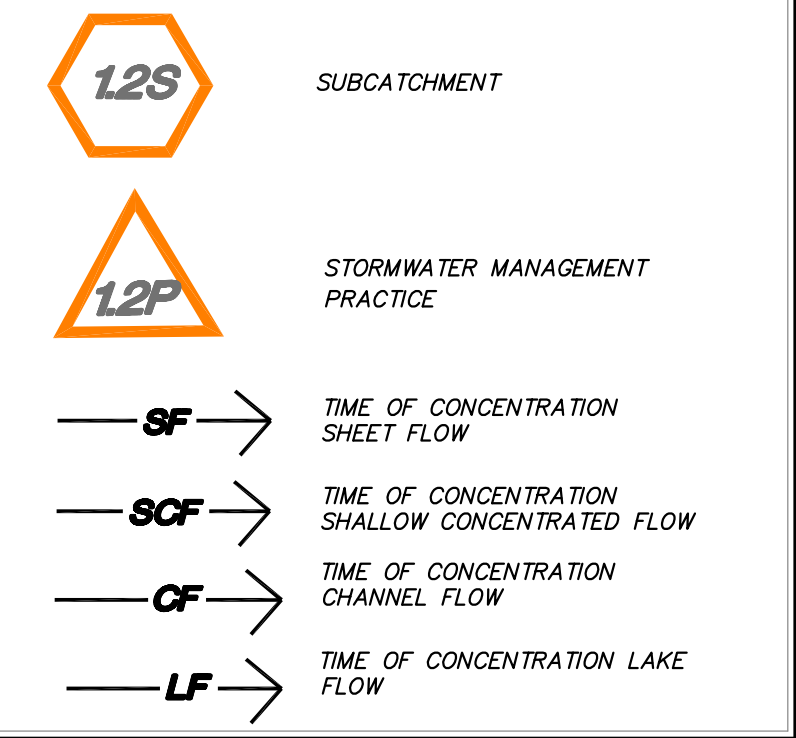


GENERAL NOTES:

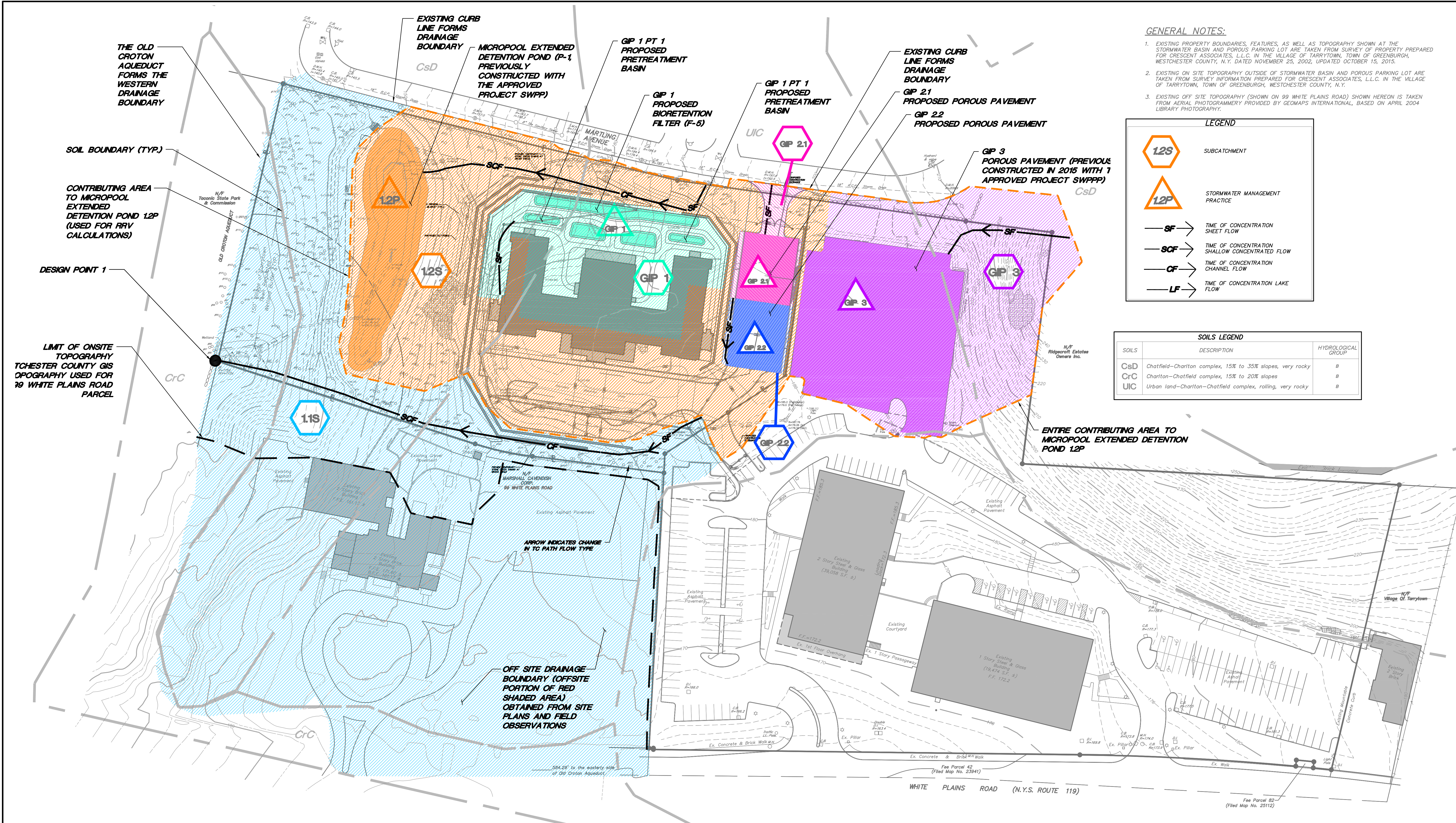
1. EXISTING PROPERTY BOUNDARIES, FEATURES, AS WELL AS TOPOGRAPHY SHOWN AT THE STORMWATER BASIN AND POROUS PARKING LOT ARE TAKEN FROM SURVEY OF PROPERTY PREPARED FOR CRESCENT ASSOCIATES, L.L.C. IN THE VILLAGE OF TARRYTOWN, TOWN OF GREENBURGH, WESTCHESTER COUNTY, N.Y. DATED NOVEMBER 25, 2002, UPDATED OCTOBER 15, 2015.
2. EXISTING ON SITE TOPOGRAPHY OUTSIDE OF STORMWATER BASIN AND POROUS PARKING LOT ARE TAKEN FROM SURVEY INFORMATION PREPARED FOR CRESCENT ASSOCIATES, L.L.C. IN THE VILLAGE OF TARRYTOWN, TOWN OF GREENBURGH, WESTCHESTER COUNTY, N.Y.
3. EXISTING OFF SITE TOPOGRAPHY (SHOWN ON 99 WHITE PLAINS ROAD) SHOWN HEREON IS TAKEN FROM AERIAL PHOTOGRAMMETRY PROVIDED BY GEOMAPS INTERNATIONAL, BASED ON APRIL 2004 LIBRARY PHOTOGRAPHY.

LEGEND

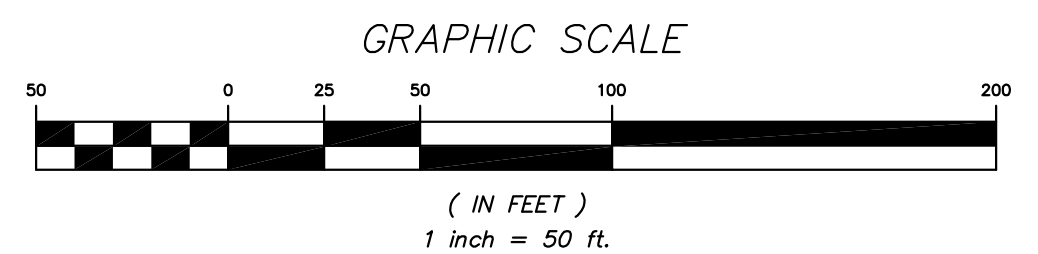


SOILS LEGEND

SOILS	DESCRIPTION	HYDROLOGICAL GROUP
CsD	Chatfield-Charlton complex, 15% to 35% slopes, very rocky	B
CrC	Charlton-Chatfield complex, 15% to 20% slopes	B
UIC	Urban land-Charlton-Chatfield complex, rolling, very rocky	B



ENTIRE CONTRIBUTING AREA TO MICROPOOL EXTENDED DETENTION POND 12P



INSITE
ENGINEERING, SURVEYING &
LANDSCAPE ARCHITECTURE, P.C.

3 Garrett Place
Carmel, NY 10512
(845) 225-9690
(845) 225-9717 fax
www.insite-eng.com

PROJECT: **ARTIS SENIOR LIVING OF TARRYTOWN**
153 WHITE PLAINS ROAD, VILLAGE OF TARRYTOWN, WESTCHESTER COUNTY, NEW YORK

DRAWING: **POST-DEVELOPMENT DRAINAGE MAP**

PROJECT NUMBER	17200.100	PROJECT MANAGER	R.D.W.	FIGURE NO. 3
DATE	1-8-19	DRAWN BY	J.W.M.	
SCALE	1" = 50'	CHECKED BY	R.D.W.	

Z:\17200\100\CADD\Drawings\Final\Drawings - Stormwater\Fig 3.dwg, 1/30/2019 1:07:40 PM, pmonroe.11